

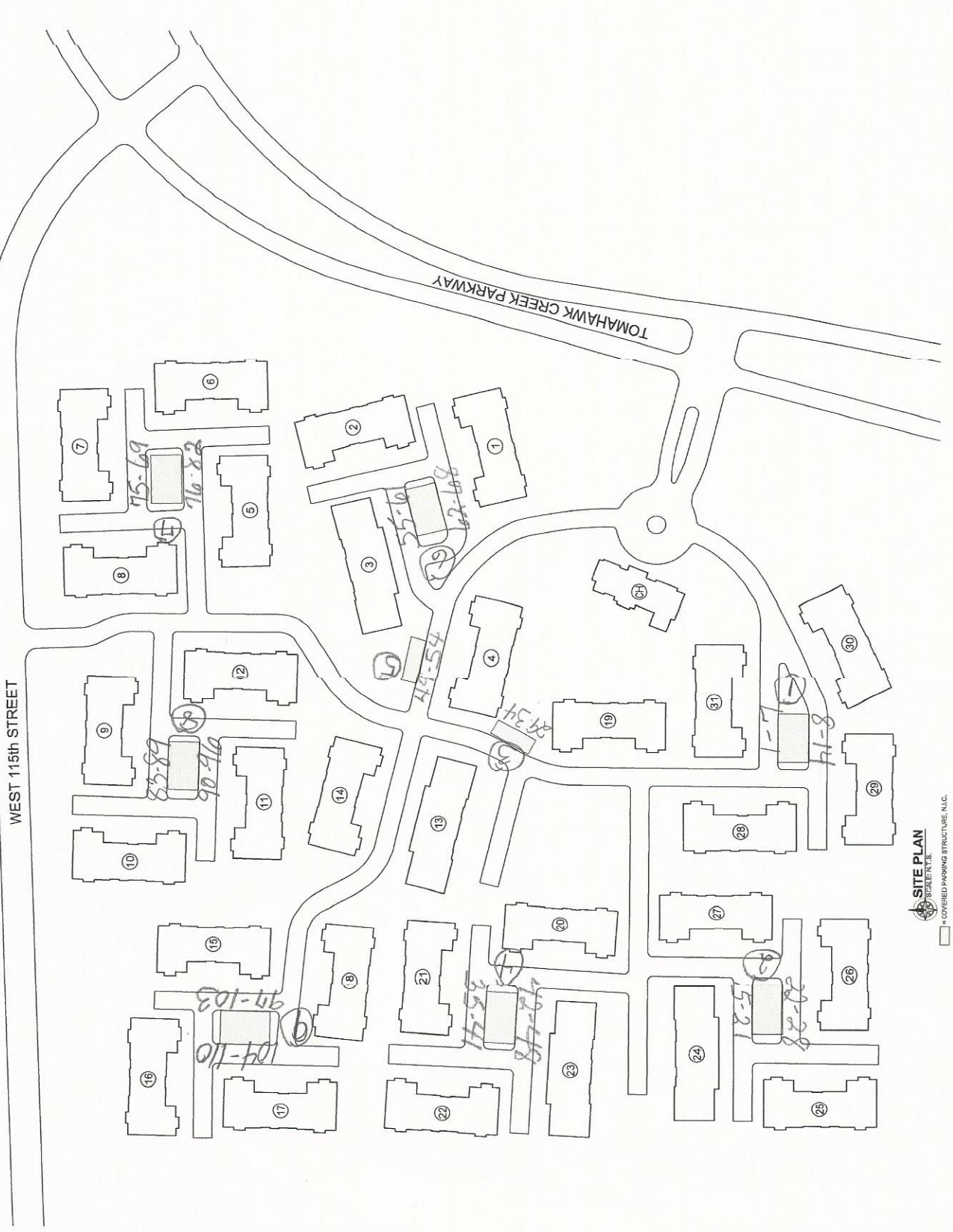
Project Name: TOMAHAWK CREEK CONDOMINIUMS  
Project Address: 11600 TOMAHAWK CREEK PARKWAY  
LEAWOOD, KS 66211

Roofing Solutions, Inc.  
6728 W. 153rd Street  
Overland Park, KS 66223  
Fax: (913)-897-1499  
Email: RSI@roofingsolutions.com

- DRAINING LEGEND**
- CATCH BASIN
  - DOWNSPOUT
  - AIR CURTAIN
  - SATELLITE
  - FLAT
  - GUTTER
  - BRIDGE
  - CONCRETE ON SLEEBES
  - CONSTRUCTION NOTE
  - NOT IN CONTACT
  - UNLESS NOTED OTHERWISE

**GENERAL NOTES**

1. All dimensions are in feet and inches.
2. All work shall be in accordance with the applicable codes and standards.
3. All work shall be in accordance with the applicable codes and standards.
4. All work shall be in accordance with the applicable codes and standards.
5. All work shall be in accordance with the applicable codes and standards.
6. All work shall be in accordance with the applicable codes and standards.
7. All work shall be in accordance with the applicable codes and standards.
8. All work shall be in accordance with the applicable codes and standards.
9. All work shall be in accordance with the applicable codes and standards.
10. All work shall be in accordance with the applicable codes and standards.
11. All work shall be in accordance with the applicable codes and standards.
12. All work shall be in accordance with the applicable codes and standards.
13. All work shall be in accordance with the applicable codes and standards.
14. All work shall be in accordance with the applicable codes and standards.
15. All work shall be in accordance with the applicable codes and standards.
16. All work shall be in accordance with the applicable codes and standards.
17. All work shall be in accordance with the applicable codes and standards.
18. All work shall be in accordance with the applicable codes and standards.
19. All work shall be in accordance with the applicable codes and standards.
20. All work shall be in accordance with the applicable codes and standards.
21. All work shall be in accordance with the applicable codes and standards.
22. All work shall be in accordance with the applicable codes and standards.
23. All work shall be in accordance with the applicable codes and standards.
24. All work shall be in accordance with the applicable codes and standards.
25. All work shall be in accordance with the applicable codes and standards.
26. All work shall be in accordance with the applicable codes and standards.
27. All work shall be in accordance with the applicable codes and standards.
28. All work shall be in accordance with the applicable codes and standards.
29. All work shall be in accordance with the applicable codes and standards.
30. All work shall be in accordance with the applicable codes and standards.
31. All work shall be in accordance with the applicable codes and standards.
32. All work shall be in accordance with the applicable codes and standards.
33. All work shall be in accordance with the applicable codes and standards.
34. All work shall be in accordance with the applicable codes and standards.
35. All work shall be in accordance with the applicable codes and standards.
36. All work shall be in accordance with the applicable codes and standards.
37. All work shall be in accordance with the applicable codes and standards.
38. All work shall be in accordance with the applicable codes and standards.
39. All work shall be in accordance with the applicable codes and standards.
40. All work shall be in accordance with the applicable codes and standards.
41. All work shall be in accordance with the applicable codes and standards.
42. All work shall be in accordance with the applicable codes and standards.
43. All work shall be in accordance with the applicable codes and standards.
44. All work shall be in accordance with the applicable codes and standards.
45. All work shall be in accordance with the applicable codes and standards.
46. All work shall be in accordance with the applicable codes and standards.
47. All work shall be in accordance with the applicable codes and standards.
48. All work shall be in accordance with the applicable codes and standards.
49. All work shall be in accordance with the applicable codes and standards.
50. All work shall be in accordance with the applicable codes and standards.
51. All work shall be in accordance with the applicable codes and standards.
52. All work shall be in accordance with the applicable codes and standards.
53. All work shall be in accordance with the applicable codes and standards.
54. All work shall be in accordance with the applicable codes and standards.
55. All work shall be in accordance with the applicable codes and standards.
56. All work shall be in accordance with the applicable codes and standards.
57. All work shall be in accordance with the applicable codes and standards.
58. All work shall be in accordance with the applicable codes and standards.
59. All work shall be in accordance with the applicable codes and standards.
60. All work shall be in accordance with the applicable codes and standards.
61. All work shall be in accordance with the applicable codes and standards.
62. All work shall be in accordance with the applicable codes and standards.
63. All work shall be in accordance with the applicable codes and standards.
64. All work shall be in accordance with the applicable codes and standards.
65. All work shall be in accordance with the applicable codes and standards.
66. All work shall be in accordance with the applicable codes and standards.
67. All work shall be in accordance with the applicable codes and standards.
68. All work shall be in accordance with the applicable codes and standards.
69. All work shall be in accordance with the applicable codes and standards.
70. All work shall be in accordance with the applicable codes and standards.
71. All work shall be in accordance with the applicable codes and standards.
72. All work shall be in accordance with the applicable codes and standards.
73. All work shall be in accordance with the applicable codes and standards.
74. All work shall be in accordance with the applicable codes and standards.
75. All work shall be in accordance with the applicable codes and standards.
76. All work shall be in accordance with the applicable codes and standards.
77. All work shall be in accordance with the applicable codes and standards.
78. All work shall be in accordance with the applicable codes and standards.
79. All work shall be in accordance with the applicable codes and standards.
80. All work shall be in accordance with the applicable codes and standards.
81. All work shall be in accordance with the applicable codes and standards.
82. All work shall be in accordance with the applicable codes and standards.
83. All work shall be in accordance with the applicable codes and standards.
84. All work shall be in accordance with the applicable codes and standards.
85. All work shall be in accordance with the applicable codes and standards.
86. All work shall be in accordance with the applicable codes and standards.
87. All work shall be in accordance with the applicable codes and standards.
88. All work shall be in accordance with the applicable codes and standards.
89. All work shall be in accordance with the applicable codes and standards.
90. All work shall be in accordance with the applicable codes and standards.
91. All work shall be in accordance with the applicable codes and standards.
92. All work shall be in accordance with the applicable codes and standards.
93. All work shall be in accordance with the applicable codes and standards.
94. All work shall be in accordance with the applicable codes and standards.
95. All work shall be in accordance with the applicable codes and standards.
96. All work shall be in accordance with the applicable codes and standards.
97. All work shall be in accordance with the applicable codes and standards.
98. All work shall be in accordance with the applicable codes and standards.
99. All work shall be in accordance with the applicable codes and standards.
100. All work shall be in accordance with the applicable codes and standards.



**SITE PLAN**  
SCALE: 1/8" = 1'-0"  
□ COVERED PARKING STRUCTURE, N.L.C.

WEST 115th STREET

TOMAHAWK CREEK PARKWAYS